

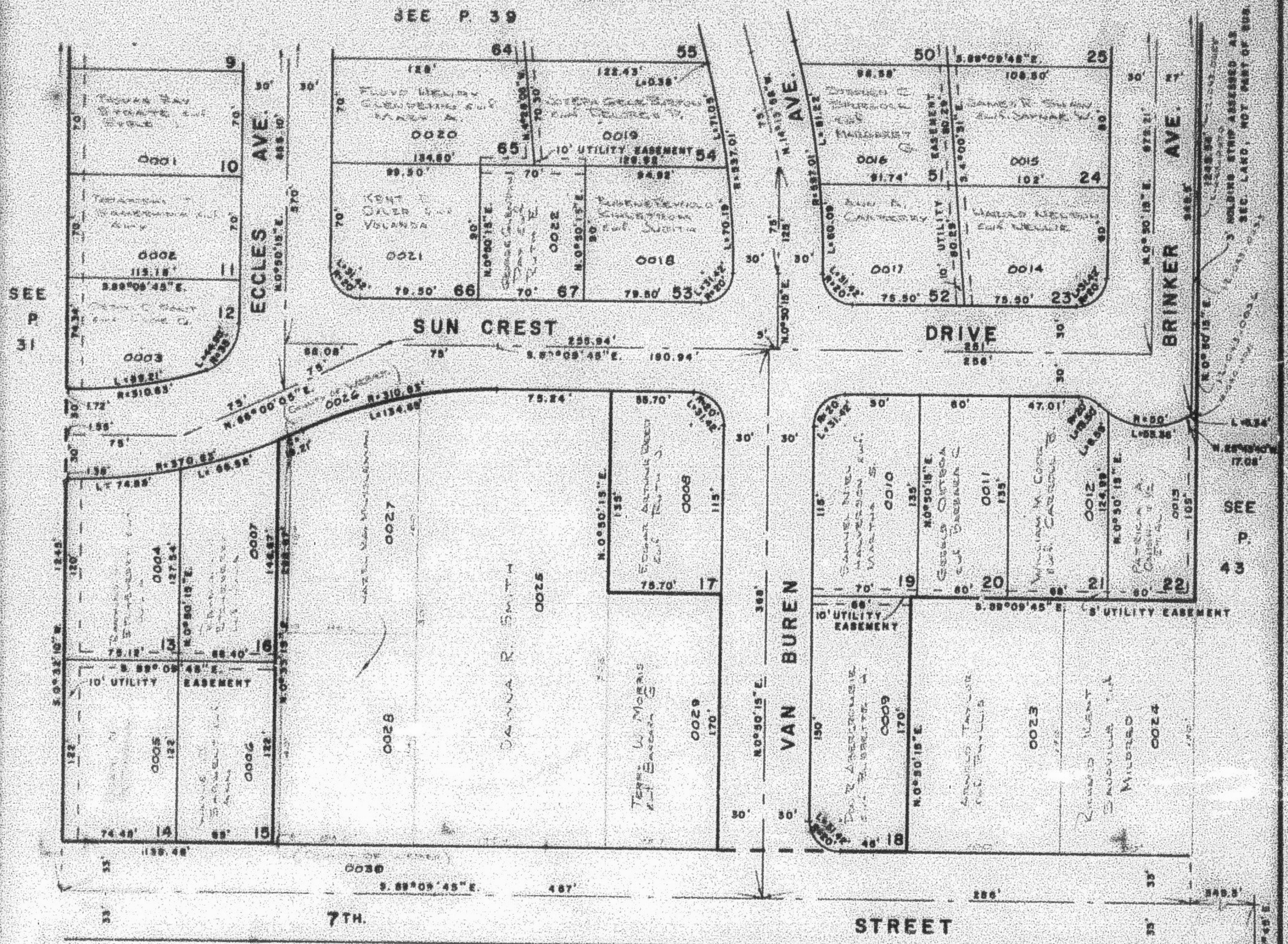
PART OF SE. 1/4 OF SEC. 16, T. 6 N., R. 1 W., S. 1 B. 8 M.
SUN CREST HEIGHTS SUBDIVISION
 LOTS 10-24, 51-54 & 65-67

TAXING UNIT 25

IN OGDEN CITY
 SCALE 1" = 50'

PREFIX 12-040

40



FOR COMPLETE ENG. DATA SEE ORIG. PLAT
 BOOK 10, PAGE 57

SEE P. 31

S.E. COR.
 S.E. 1/4
 SEC. 16